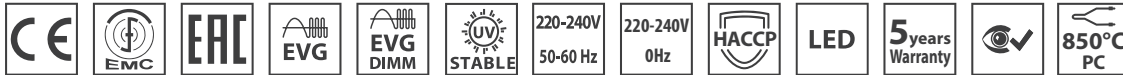
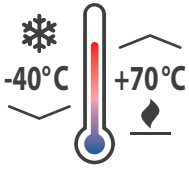
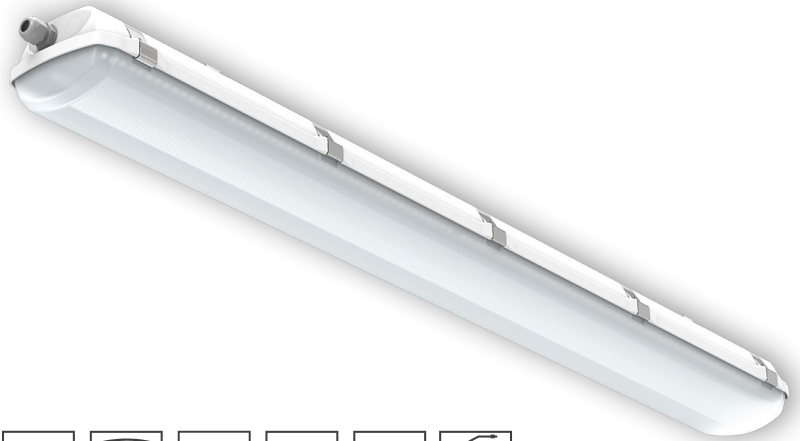


# EXTRA-PRO-PLUS/FROST

IP 66



**Application:** Dustproof lighting fixture of new generation EXTRA-PRO-PLUS/FROST with splash water resistance is designed for workshops, warehouses, production areas and garages with higher ambient temperature.

**Ballast:** EP – electronic 220-240 V/50-60 Hz AC, 220-240 V DC

**Light source:** LED, 4000K, CRI +80, MacAdam3

**Housing:** Plastic material PC (polycarbonate), grey colour RAL 7035

**Diffuser:** PC (polycarbonate), opal

**Fastening:** Surface ceiling or wall mounting by means of two self-locking fastening brackets (standard equipment) or set of wall brackets - angle 45°, pole mounting via set of pole brackets, suspension by means of wire or cable suspenders.

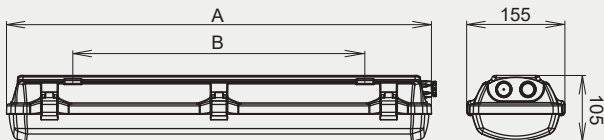
**Connection:** Screwless three-pole terminal block, maximum diameter of wires 2.5 mm<sup>2</sup>.

**Standard equipment:** Cable gland M20 for diameter of cable 7-12mm and fastening brackets for direct fastening of lighting fixtures to a mounting surface and stainless clips.

**Calculated lifetime – LED modules:**

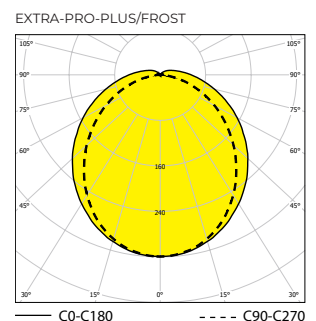
L80B10 Ta30 – 70 000h

L70B10 Ta30 – 100 000h



Order number	Name	Lighting fixture luminous flux (lm)	Power input (W)	Rated power output (lm/W)	Ta max (°C)	Dimensions of lighting fixture A (mm)	Mounting spacing B (mm)	Weight (kg)
AL054480	EXTRA-PRO-PLUS/FROST-1R-5000-236-4K	4347	28	155	70	1280	880	3,18
AL054481	EXTRA-PRO-PLUS/FROST-2R-10000-236-4K	8694	56	155	60	1280	880	3,30
AL054482	EXTRA-PRO-PLUS/FROST-1R-4750-258-4K	4221	26	162	70	1580	1000	3,96
AL054483	EXTRA-PRO-PLUS/FROST-1R-7500-258-4K	6776	43	158	65	1580	1000	3,70
AL054484	EXTRA-PRO-PLUS/FROST-2R-12500-258-4K	10911	69	158	60	1580	1000	3,90

Tolerance of luminous flux and power input of the lighting fixture +/- 10%



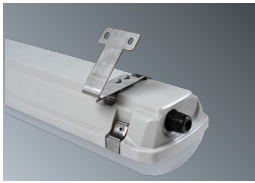
## Accessories on request



AL001696 Wire suspension EXTRA



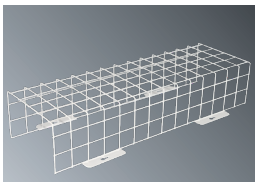
AL051131 Cable suspension-EXTRA-2x (3m)



AL064643 Set of wall brackets - angle 45° EXTRA, AISI304 (2 pcs)



AL051157 Pole bracket EXTRA (for Ø 50 mm), AISI304 (1 pc)



AL001748 LAK Protective cage EXTRA 18W

AL001749 LAK Protective cage EXTRA 36W

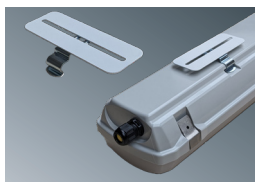
AL001750 LAK Protective cage EXTRA 58W



AL008006N Cable gland ESKV M20x1.5

AL008088 Ventilation plug EVPS 20, grey RAL 7035

AL008097 Plastic nut WISKA EMUG 20 M20x1.5



AL065465 Adjustable fixing brackets EXTRA

## Lighting fixture detail



## On request

**GESIS** – possibility to equip lighting fixtures with connectors

**2.7K-6.5K** - colour temperature

**1/3 F** - single-phase or three phase through wiring connection, maximum diameter of wires 2.5 mm<sup>2</sup>

**DIM** – dimmable electronic ballast (DALI)

**NUP** - stainless fastening bracket

**NSPP** - stainless steel clip and fastening bracket

Stadard order number	EM-1H	EM-3H	MULTI-1H	MULTI-3H	DALI	1F	3F
AL054480	X	X	X	X	AL054480 DALI	AL054480 1F	AL054480 3F
AL054481	X	X	X	X	AL054481 DALI	AL054481 1F	AL054481 3F
AL054482	X	X	X	X	AL054482 DALI	AL054482 1F	AL054482 3F
AL054483	X	X	X	X	AL054483 DALI	AL054483 1F	AL054483 3F
AL054484	X	X	X	X	AL054484 DALI	AL054484 1F	AL054484 3F